

# 2021 NASORLO ANNUAL CONFERENCE PENNSYLVANIA

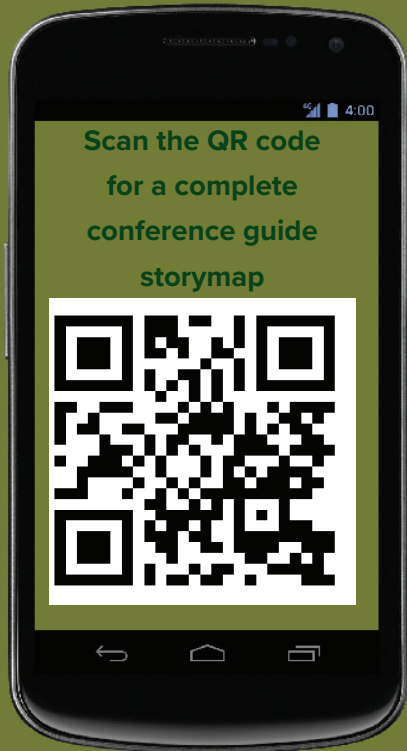
October 4-8, 2021



**pennsylvania**  
DEPARTMENT OF CONSERVATION  
AND NATURAL RESOURCES

# TABLE OF CONTENTS

- 3. President and Welcome Message
- 5. Opening Session & Keynote Speakers
- 8. Conference Program Schedule
- 11. Gettysburg Tour
- 12. Carlisle Tour
- 12. Carlisle Ghost and Historical Tour
- 13. South Mountain Tour
- 14. Lancaster City and  
Susquehanna Riverland Tour
- 15. NASORLO Leadership and Officers
- 17. Sponsors



## PRESIDENT'S MESSAGE



## WELCOME FROM PENNSYLVANIA



**Linda Lanterman, NASORLO President  
Kansas State Park Director**

Welcome to the 2021 NASORLO Annual Meeting and Training sessions in downtown Carlisle, PA! In my final year as NASORLO President, I look back with a sense of accomplishment as both the John D. Dingell Conservation, Recreation and Management and Great American Outdoors Act have been passed and we all are engaged in their implementation.

We face many challenges to address these improvements and subsequent administrative changes, even as we realize the aspirations of generations of NASORLO Members and leaders who dreamed of permanent, dedicated, and full LWCF funding, including a restoration of an equitable share for the states and territories has been accomplished.

We meet this week in an idyllic setting in the Cumberland Valley of Pennsylvania to address the fact our grants world has changed significantly since we all last met in Reno in 2019. We need this meeting to discuss these issues and develop an Action plan for the future that gives us the best chance to make the changes necessary for the effective administration of this great program.

As my tenure ends, I remain committed to NASORLO and its advocacy for the LWCF program, the stewardship of its legacy and to improve its administration for the future. We also enter a new era of partnerships and agreements with like-minded organizations and businesses who realize the important role of the state and territorial governments in the administration of the LWCF program. We will together work to ensure a successful and long-term stewardship of its resources and improvement of park and recreation areas distributed equitably throughout the nation.

Let us have a great meeting and proceed on in carrying on the legacy of the LWCF State Assistance Program.



**Lauren Imgrund, DCNR Deputy Secretary  
for Conservation and Technical Services**

Welcome to Pennsylvania – the Keystone State:

We are excited and honored to host the 2021 National Association of State Outdoor Recreation Liaison Officers in Carlisle! Carlisle is a small, dynamic town located in bucolic south-central Pennsylvania, at the heart of the South Mountain Conservation Landscape. Pennsylvania's Conservation Landscapes are national models of successful collaboration for outdoor recreation and conservation. During your visit with us, we will see communities, parks, and beautiful natural areas in two of these landscapes, South Mountain and Susquehanna Riverlands. Pennsylvania has about 1200 LWCF local park sites, a number of which we will visit. We will also tour several LWCF protected state park and state forest lands. Federal LWCF sites will also be showcased, including Gettysburg Battlefield, the Appalachian National Scenic Trail, and meet with a federally-designated National Heritage Area.

Pennsylvania has a remarkable conservation and outdoor recreation heritage. Our founder William Penn charged settlers to leave one acre of woods for every five acres cleared; Maurice K. Goddard, Cabinet Officer for six Pennsylvania Governors over 24 years, established the goal of a state park within 25 miles of every Pennsylvanian (achieved with our 121 state park system); and Article 1, Section 27\* of our Constitution enshrines conservation as a fundamental right. In honor of this legacy, our most recent State Comprehensive Outdoor Recreation Plan establishes a goal of a neighborhood park within 10 minutes of every Pennsylvanian.

We have a fabulous DCNR staff team supporting the Conference and we hope to make your stay and visit enjoyable. We have worked hard with the NASORLO Board to plan an informative, educational, and unique conference. Thanks to all of you for joining us this week as we all strive to bring the joy of parks to our communities through the remarkable federal, state, and local partnership that is the Land and Water Conservation Fund!

Lauren Imgrund, Pennsylvania State Liaison Officer

• Article 1 Section 27, Pennsylvania Constitution: The people have a right to clean air, pure water, and to the preservation of the natural, scenic, historic and esthetic values of the environment. Pennsylvania's public natural resources are the common property of all the people, including generations yet to come. As trustee of these resources, the Commonwealth shall conserve and maintain them for the benefit of all the people.

# OPENING SESSION SPEAKERS

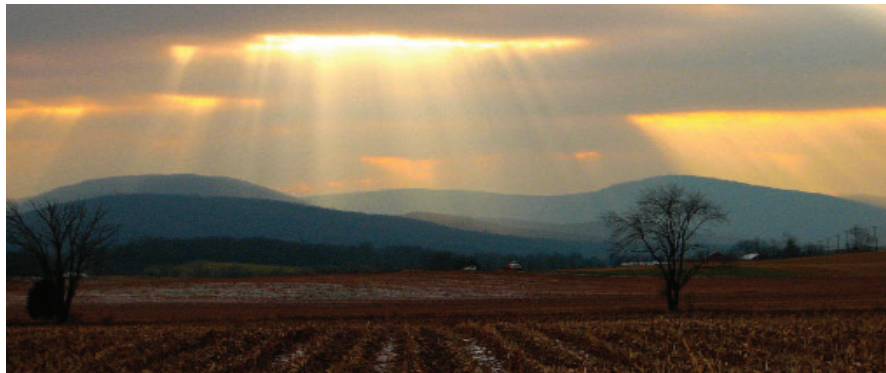
## Allen Dieterich Ward - Opening Remarks

### Professor of History, Shippensburg University



Allen Dieterich-Ward is an environmental and urban historian with a focus on political ecology and community development. He has earned acclaim for teaching, professional service, and scholarship, including the Arline Custer Memorial Award from the Mid-Atlantic Regional Archives Conference for “Beyond Rust: Metropolitan Pittsburgh and the Fate of Industrial America”, which was published in 2016 by the University of Pennsylvania Press. Allen holds a PhD in history from the University of Michigan (2006), an MA in history from Michigan (2002), and a BA from the College of Wooster (2000).

Allen is currently a professor of history at Shippensburg University and the immediate past president of the Pennsylvania Historical Association. He serves as coeditor of the Pennsylvania History series, a joint publication of the PHA and Temple University Press. He is also active in the conservation and community development communities, serving on the board of the Cumberland Valley Rails-to-Trails Council and the steering committee of the Pennsylvania Conservation Heritage Committee among others.



## Cindy Adams Dunn - Keynote Speaker

### DCNR Secretary



Cindy Adams Dunn is the sixth secretary of the Department of Conservation and Natural Resources. At DCNR, she has helped position Pennsylvania as a leader in land conservation, outdoor recreation, green practices and public land management. During her tenure the department created the Pennsylvania Outdoor Corps to connect youth and young adults with job opportunities relating to the outdoors and the environment.

Under her direction, Pennsylvania continues efforts to address the impacts of climate change, as well as providing leadership on planting forest buffers along streams to improve water quality.

Dunn has worked in both the public and private sectors. She served in several leadership posts at leading environmental advocacy groups like Audubon Pennsylvania, the Alliance for the Chesapeake Bay and PennFuture.

She is trained as a biologist, and when not at work championing conservation her hobbies include birding, fishing, canoeing and hiking.





## 2021 NASORLO CONFERENCE PROGRAM

### **Monday, October 4**

- |                         |   |
|-------------------------|---|
| 10:00 a.m. - all day    | Early Arrival and Hotel Check in                        |
| 10:00 a.m. - 11:30 a.m. | Pre Conference Modernization Committee                  |
| 11:30 a.m. - 12:30 p.m. | Lunch on Your Own                                       |
| 12:30 p.m. - 5:00 p.m.  | Gettysburg Museum, Visitors Center and Battlefield Tour |
| 6:00 p.m. - 8:00 p.m.   | Dinner On Your Own                                      |
| 8:00 p.m. - 10:00 p.m.  | Informal Social   |

### **Tuesday, October 5 (Virtual Training Day)**

- |                         |  |
|-------------------------|--|
| 7:00 a.m. - 12:00 p.m.  | Registration Table Open  |
| 7:00 a.m. - 8:00 a.m.   | Breakfast Provided   |
| 8:00 a.m. - 8:30 a.m.   | Opening Session and Annual Program Review  |
| 8:30 a.m. - 9:30 a.m.   | LWCF 101 - Dana Lagarde  |
| 9:30 a.m. - 10:30 a.m.  | Performance, Financial and Inspection Reporting - Eric Feldbaum, Elisabeth Fondriest       |
| 10:30 a.m. - 10:45 a.m. | Break  |
| 10:45 a.m. - 11:45 a.m. | Innovations and Trends in Stewardship/ Inspections - Janice Keillor, Shane Hoover          |
| 11:45 a.m. - 1:30 p.m.  | Lunch On Your Own  |
| 1:30 p.m. - 2:30 p.m.   | Let's Talk about Appraisals - Ashley Rebert, Antionette Norfleet, Mick Rogers, Greg Snyder |
| 2:30 p.m. - 3:30 p.m.   | Forms, Forms, Forms - Linda Lanterman, Kati Westerhaus                                     |
| 3:30 p.m. - 4:30 p.m.   | Issues, Trends and Success with Conversions - Lauren Imgrund, Mary (Missy) Morrison        |

# 2021 NASORLO CONFERENCE PROGRAM



- 5:00 p.m. - 8:00 p.m. Dinner On Your Own
- 8:00 p.m. - 10:00 p.m. Opening Social at the Comfort Suites - Host Bio Solutions

## Wednesday, October 6 (Morning Sessions Available on Zoom - Peter Spadaro)

- 7:00 a.m. - 8:00 a.m. Breakfast Provided
- 8:00 a.m. - 9:00 a.m. Welcome to Pennsylvania – Lauren Imgrund and Allen Dietrich Ward
- 9:00 a.m. - 10:00 a.m. Opening NASORLO Business Session
- 10:00 a.m. - 10:15 a.m. Break
- 10:15 a.m. - 11:00 a.m. National Park Service Report
- 11:00 a.m. - 12:00 p.m. Partner Reports – Signal, NRPA, NGA, TPL, NASPD, PlayCore
- 12:00 p.m. - 1:30 p.m. Lunch Provided - Keynote Speaker DCNR Secretary Cindy Adams Dunn
- 1:30 p.m. - 4:00 p.m. Tour and Discussion of Carlisle LWCF Park Sites, Challenges, and Innovations
- 6:00 p.m. - 8:00 p.m. Dinner on Your Own
- 8:30 p.m. - 10:00 p.m. Ghost and Historical Tour of Carlisle (Optional)

## Thursday, October 7 (Business Meeting Available on Zoom - Peter Spadaro)

- 7:00 a.m. - 8:00 a.m. Breakfast Provided
- 8:00 a.m. - 8:45 a.m. NASORLO Business Session #2

- 9:00 a.m. - 5:00 p.m. Tour the South Mountain Conservation Landscape and Discuss Key LWCF Issues
- 5:00 p.m - 7:30 p.m. Dinner and NASORLO Awards
- 7:30 p.m. - 8:30 p.m. Return to the Hotel
- 8:30 p.m. - 10:30 p.m. Informal Social

## Friday, October 8

- 7:30 a.m. - 8:30 a.m. Breakfast On Your Own
- 7:30 a.m. - 8:30 a.m. Final NASORLO Business Meeting (Available on Zoom)
- 8:30 a.m. - 4:30 p.m. Tour Lancaster City's Green and Sustainable Culliton Park and Explore Natural and Historical Sites in the Susquehanna Riverlands Conservation Landscape (Optional)
- 4:30 p.m. Return to Carlisle
- 6:00 p.m. Dinner On Your Own

Scan the QR code for a complete conference guide storymap



# GETTYSBURG MUSEUM, VISITORS CENTER AND BATTLEFIELD TOUR



**Monday, October 4 - 12:30 p.m. - 5:00 p.m.**

## Gettysburg Tour

### Licensed Battlefield Guides

**Gettysburg Museum and Visitors Center** - Before heading out to that “great battlefield,” gain insight into the battle, the stories and personalities by starting your Gettysburg visit with the Film, Cyclorama & Museum Experience at the Gettysburg National Military Park Museum & Visitor Center.

**Battlefield Tour** - Take your place on the battlefield and experience it beyond the history books and movies. Take this chance to interact with iconic landmarks such as Little Roundtop, Devils Den, Cemetery Hill, The Angle and Copse of Trees. Understand what happened here and the impact the battle and its aftermath has on our lives today.

### Sites you will visit:

**Gettysburg Museum and Visitors Center**

**Gettysburg Battlefield Tour**



# CARLISLE LWCF PARK SITES, CHALLENGES, AND INNOVATIONS TOUR



**Wednesday, October 6 - 1:30 p.m. - 4:30 p.m.**

## Carlisle Tour

### Andrea Crouse, Director of Carlisle Parks and Recreation

Walk/Bus to Letort Park for a presentation from Andrea Crouse, Director of Carlisle Parks and Recreation, about the various LWCF park sites in the Borough. From there experience a brief walk along LeTort Spring Run, one of the finest limestone trout streams in the nation, and bus visits to various LWCF sites around Carlisle.

Priority topics include conversions, acquisitions, trail development, working with partners and inspections.

### Sites you will visit:

**Letort Park, Carlisle Borough**

**Thornwald Park - Homewood Tract Acquisition, Carlisle Borough**

**Carlisle Community Pool, Carlisle Borough**

**Wednesday, October 6 - 8:30 p.m. - 10:00 p.m.**

## Carlisle Ghost & Historical Tour

Learn about Carlisle’s rich history from the American Revolution, to the Civil War and beyond. Discover the extraordinary, suspicious and sometimes tragic tales of past residents and understand what led them to linger here after their death. Why do light bulbs explode in a home on High Street? Who is the mysterious woman who haunts Pitt Street? Who walks Dickinson Campus after dark? Find out the answer to these questions and more.



# THE SOUTH MOUNTAIN CONSERVATION LANDSCAPE AND DISCUSS KEY LWCF ISSUES TOUR

Thursday, October 7 - 9:00 a.m. - 5:00 p.m.

## South Mountain Tour

**Sarah Colondrillo,  
Andre Weltman**

**Conversions** - Site visits to South Middleton Township's scenic, interconnected park system near historic Boiling Springs and the Yellow Breeches Creek. Stops include Spring Meadows Park and South Middleton Park. Both are LWCF sites and have been involved in a conversion(s). At each site we will hear from Township and DCNR staff on how these conversions were resolved.



**Environmental Education** - Visit to Kings Gap Environmental Education Center, a LWCF funded park. Kings Gap is one of several state parks specifically dedicated to provide environmental education and recreational programs to the citizens of Pennsylvania to increase knowledge and awareness of the values and function of our natural resources. This stop would include lunch in the Mansion Dining Room.

**Issues with Trails Development** - Visit to historic Pine Grove Furnace State Park, Iron Masters Mansion and the Appalachian Trail Museum. In 1913, the 17,000-acre Pine Grove Ironworks was sold to the Commonwealth of Pennsylvania to be part of the new Forest Reserve system. Much of the land became Michaux State Forest, and part became Pine Grove Furnace State Park.



### Sites you will visit:

**Spring Meadows Park, South Middleton Twp  
South Middleton Park, South Middleton Twp  
Kings Gap Mansion and Environmental Center  
Pine Grove Furnace State Park  
Boyer's Nursery**

# LANCASTER CITY AND SUSQUEHANNA RIVERLANDS TOUR

Friday, October 8 - 8:30 a.m. - 4:30 p.m.

**Tour a Green and Sustainable Lancaster City LWCF Park, Pinnacle Overlook, and Susquehanna National Heritage Area**

**Matt Metzler, Kate Gonick, Phil Wenger, Nate Brown, Mark Platts, Paul Nevin**

**Culliton Park, Lancaster City** - Visit Culliton Park in downtown Lancaster which incorporated green infrastructure design and stormwater best management practices when it was renovated utilizing LWCF and local funds. It features a wading pool, basketball courts, public art, green infrastructure and a playground. Learn how the city utilizes its park system to meet a variety of needs.

**Pinnacle Overlook, Holtwood** - Explore Pinnacle Overlook in Holtwood, on the eastern banks of the Susquehanna River. The park sits on a bluff nearly 400 feet above the river with expansive views of preserved wildlands in the Susquehanna Riverlands Conservation Landscape. Speakers from the Lancaster Conservancy and DCNR Bureau of State Parks will share how they formed a unique partnership with the utility companies to acquire, conserve and maintain over 5,000 acres of land along the Susquehanna River.



**Susquehanna National Heritage Area, Zimmerman Center for Heritage, Long Level** Visit the historic Zimmerman Center for Heritage; headquarters of the Susquehanna National Heritage Area (SNHA) in York County. Susquehanna National Heritage Area is America's 55th National Heritage area and official passport site of National Park Service Captain John Smith Chesapeake Water Trail. Staff from SNHA will lead an educational land tour of the Zimmerman Center and Native Lands Park and water tour by pontoon boat on the Captain John Smith National Chesapeake Water Trail on the Susquehanna River.

### Sites you will visit:

**Culliton Park, Lancaster City  
Pinnacle Overlook, Holtwood  
Susquehanna National Heritage Area, Zimmerman  
Center for Heritage & Long Level**



# NASORLO LEADERSHIP AND OFFICERS –

## 2020-22 ELECTED OCT 2020

( YEAR OF TERM EXPIRATION )

### President

**Linda Lanterman, ASLO KS (2021):** Director, Parks Division, Kansas Department of Wildlife and Parks; 512 Southeast 25th Avenue, Pratt, KS 67124-8174. (P) 620-672-5911 Ext. 140; (F) 620-672-2972; (E) [linda.lanterman@ks.gov](mailto:linda.lanterman@ks.gov)

### Vice President

**Eric Feldbaum, ASLO NH (2021):** Community Recreation Specialist, Division of Parks and Recreation, NH Dept. of Resources & Economic Development; 172 Pembroke Road, Concord, NH 03301. (P) 603-271-3556, ext 227; (F) 603-271-3553; (E) [eric.feldbaum@dred.nh.gov](mailto:eric.feldbaum@dred.nh.gov)

### Secretary

**Doug Beck, ASLO ME (2021):** Outdoor Recreations Supervisor, Maine Bureau of Parks and Lands, 124 State House Station, Augusta, ME 04333-0124. (P) 207-624-6090; (F) 207-287-3342; (E) [doug.beck@maine.gov](mailto:doug.beck@maine.gov)

### Immediate Past President

**Lauren Imgrund, SLO PA (2021):** Deputy Secretary, Conservation & Technical Services, PA Department of Conservation & Natural Resources, 400 Market Street, 7th Floor, Harrisburg, PA 17105. (P) 717-772-9085; (F) 717-787-9577; (E) [limgrund@pa.gov](mailto:limgrund@pa.gov)

### NASORLO Board Members:

Northwest Region States: CT, MD, DE, ME, NH, PA, NY, VT, MA, RI, NJ

**Robert Ehemann, ASLO DE (2021):** Program Manager, Park Resource Office, Division of Parks and Recreation, 89 Kings Highway, Dover, DE 19901. (P) 302-739-9240; (F) 302-739-3817; (E) [robert.ehemann@state.de.us](mailto:robert.ehemann@state.de.us)

**Janice Keillor, ASLO NV (2021) At Large substitute for the NE:** Deputy Administrator, Planning and Grants, Department of Conservation and Natural Resources, Division of State Parks, 901 S. Stewart St., Suite 5005, Carson City, NV 89701-5248. (P) 775-684-2787; (F) 775-684-2777; (E) [jkeillor@parks.nv.gov](mailto:jkeillor@parks.nv.gov)

Southeast Region States: AL, DC, FL, NC, TN, MS, SC, VA, GA, PR, VI

**Antionette Norfleet, ASLO GA (2022):** Grants Program Manager, Department of Natural Resources, Panola Mountain State Park, 2600 Hwy 155 SW, Suite C., Stockbridge, GA 30281. (P) 770-389-7264; (F) 770-389-7925; (E) [antoinette\\_norfleet@dnr.state.ga.us](mailto:antoinette_norfleet@dnr.state.ga.us)

**Gerald Parish, Jr., ASLO TN (2021):** Director, Recreational Education Services Division, Recreation Educational Services, William R. Snodgrass Tennessee Tower, 312 Rosa L. Parks Ave., 2nd Floor, Nashville, TN 37243-0439. (P) 615-532-0538; (F) 615-532-0778; (E) [gerald.parish@tn.gov](mailto:gerald.parish@tn.gov)

North Central Region States: IN, IL, KY, MI, MN, OH, WV, WI

**Audrey Mularie ASLO MN (2022):** Grant Specialist Coordinator, Parks and Trails, Department of Natural Resources, 500 Lafayette Road North, Box 10, St. Paul, MN 55155-4010. (P) 651-259-5591; (F) 651-297-1157; (E) [erika.rivers@state.mn.us](mailto:erika.rivers@state.mn.us)

**Christie Bayus, ASLO MI (2021):** Manager, Grants Management Section, Michigan Department of Natural Resources, P.O. Box 30425, Lansing, MI 48909-7925. (P) 517-284-5930; (F) 517-241-3687; (E) [bayusc@michigan.gov](mailto:bayusc@michigan.gov)

South Central Region States; AR, LA, OK, IA, MO, TX, KS, NE

**Dana Lagarde, ASLO TX (2022):** Director of Recreation Grants, Texas Parks and Wildlife Department, 4200 Smith School Road, Austin, TX 78744. (P) 512-389-8175; (E) [dana.lagarde@tpwd.texas.gov](mailto:dana.lagarde@tpwd.texas.gov)

**John Beneke, ASLO AR (2021):** Director, Outdoor Recreation Grants Program, Arkansas Department of Parks and Tourism, One Capitol Mall, Little Rock, AR 72201. (P) 501-682-1523; (F) 501-682-0081; (E) [john.beneke@arkansas.gov](mailto:john.beneke@arkansas.gov)

Southwest Region States: AM, CO, NV, UT, AZ, GU, CA, HI, NM

**Sedrick Mitchell, ASLO CA (2021):** Deputy Director of External Affairs, CA Dept. of Parks and Recreation, P.O. Box 942896, Sacramento, CA 94296. (P) 512-389-8175; (F) 916-653-6511; (E) [sedrick.mitchell@parks.ca.gov](mailto:sedrick.mitchell@parks.ca.gov)

**Mick Rogers, ASLO AZ (2022):** Chief of Grants and Trails, Arizona State Parks & Trail, 23751 N 23rd Ave, Suite 190, Phoenix, AZ 85085. (P) 602-542-6942; (F) 602-542-4180; (E) [mrogers@azstateparks.gov](mailto:mrogers@azstateparks.gov)

Northwest Region States: AK, ID, MT, ND, OR, SD, WA, WY

**Randy Kittle, ASLO SD (2021):** Grants Coordination, South Dakota Game, Fish and Parks, Foss Building, 523 East Capitol Ave. Pierre, SD, 57501-3182. (P) 605-773-5490; (F) 605-773-6245; (E) [randy.kittle@state.sd.us](mailto:randy.kittle@state.sd.us)

### Executive Director

**Dr. Douglas K. Eiken:** 105 H., ABNR Building, University of Missouri, Columbia, MO 65211. (P) 573-353-2702; (F) 573-882-9516; (E) [nasorlo@gmail.com](mailto:nasorlo@gmail.com) website: [www.nasorlo.org](http://www.nasorlo.org)

# TOUR SPEAKERS



**Andrea Crouse**  
Director of Carlisle Parks and Recreation



**Sarah Colondrillo**  
Director of Recreation  
South Middleton Township



**Andre Weltman**  
Chairman of Friends of Pine Grove Furnace



**Matt Metzler**  
Deputy Director of Public Works, Construction, and Operations  
City of Lancaster



**Kate Gonick**  
Director of Land Protection and In-House Counsel  
Lancaster Conservancy



**Phil Wenger**  
CEO  
Lancaster Conservancy



**Nate Brown**  
Park Manager 1,  
Samuel S. Lewis and Susquehannock State Parks



**Mark Platts**  
President,  
Susquehanna National Heritage Area



**Paul Nevin**  
Manager,  
Zimmerman Center for Heritage, Susquehanna National Heritage Area

**Proud Partner and Supporter of NASORLO**

Collaboration • Resources • Professional Development

[www.playcore.com](http://www.playcore.com)      [www.gametime.com](http://www.gametime.com)

Proud Supporters of NASORLO And LWCF  
Dedicated to supporting our nation's parks and recreation industry!

NASORLO Annual Conference  
Technology Equipment Sponsor



A PLAYCORE Company

# Brio<sup>2</sup> Solutions

Building Sustainable Communities

Proud Supporters of NASORLO And LWCF

Co - Founders -

Dr Peggy Riggs and Jodie Adams (CPRP)

Dedicated to supporting our nation's parks and recreation industry!

NASORLO Annual Conference

Tuesday Social Sponsor



## SOLUTIONS FOR LIGHTING

Since 1976, Musco has specialized in the design and manufacture of sports and large area lighting. We're committed to providing lighting solutions and services you can rely on.

Musco's TLC for LED® technology provides superior energy efficiency, environmental light control and cost effectiveness, all supported by our leading product assurance and warranty program.

Scan the QR code or go to <https://www.musco.com/statueliberty> to learn more about the lighting of the Statue of Liberty.



**MUSCO**  
Lighting  
We Make It Happen.

**Proud Sponsor of NASORLO**



A collage of five images showcasing Musco's lighting solutions: the Washington Monument at night, a large sports stadium at night, a large rock formation at night, a large sports field at night, and the White House at night.

©2021 Musco Sports Lighting, LLC - ADNASORLO21-1

# AMERICA'S STATE PARKS



Welcome to PA - Cumberland Valley Visitors Bureau



## EXTEND THE FUN WITH PLAYCUBES® EXTENSIONS

PlayCubes Extensions are exciting elements that add challenge and varied climbing paths to any PlayCubes structure. With new climbers, a sliding pole, and more, PlayCubes Extensions will bring even more fun and individuality to your next PlayCubes design!

View more at [Playworld.com/PlayCubes](http://Playworld.com/PlayCubes)





**NASORLO**

National Association of  
State Outdoor Recreation  
Liaison Officers

Questions or comments during the program?

Contact:

Peter Spadaro

[pspadaro@pa.gov](mailto:pspadaro@pa.gov)

717-678-0079



**pennsylvania**

DEPARTMENT OF CONSERVATION  
AND NATURAL RESOURCES